



**Electrolux**  
PROFESSIONAL

**Modular Cooking Range Line  
900XP 400mm Gas Fry Top,  
Ribbed Brushed Chrome Plate**

ITEM # \_\_\_\_\_

MODEL # \_\_\_\_\_

NAME # \_\_\_\_\_

SIS # \_\_\_\_\_

AIA # \_\_\_\_\_



391354 (E9IILAAOMCA)

\* NOT TRANSLATED \*

### Main Features

- Unit to be mounted on open base cupboards, bridging supports or cantilever systems.
- Large drain hole on cooking surface permits the draining of fat into large 1 liter collector placed under the cooking surface.
- Stainless steel high splash guards on the rear and sides of cooking surface. Splash guards can be easily removed for cleaning and are dishwasher-safe.
- Piezo spark ignition with thermostatic valve for added safety.
- The special design of the control knob system guarantees against water infiltration.
- IPX5 water protection.
- Temperature range from 90° up to 270°C.
- Rough brushed chrome surface is highly resistant to scratches and facilitates cleaning operations at the end of the day.
- Scraper for ribbed plate included as standard.
- Suitable for countertop installation.

### Construction

- Unit is 930 mm deep to give a larger working surface area.
- All exterior panels in Stainless Steel with Scotch Brite finishing.
- AISI 304 stainless steel worktop, 2mm thick.
- Model has right-angled side edges to allow flush fitting joints between units, eliminating gaps and possible dirt traps.
- Cooking surface 15mm thick brushed chrome for optimum grilling results and ease of use.
- Cooking surface completely ribbed.

### Included Accessories

- 1 of SCRAPER FOR RIBB PATE FRY TOP PNC 206420

### Optional Accessories

- Junction sealing kit PNC 206086 ☐
- Draught diverter PNC 206126 ☐
- Matching ring for flue condenser PNC 206127 ☐
- Support for bridge type system, 800mm PNC 206137 ☐
- Support for bridge type system, 1000mm PNC 206138 ☐
- Support for bridge type system, 1200mm PNC 206139 ☐
- Support for bridge type system, 1400mm PNC 206140 ☐
- Support for bridge type system, 1600mm PNC 206141 ☐
- Water drain for half module fry tops PNC 206153 ☐

APPROVAL: \_\_\_\_\_



Experience the Excellence  
[www.electroluxprofessional.com](http://www.electroluxprofessional.com)

- Support for bridge type system, 400mm PNC 206154 ☐
- BACK HANDRAIL 800 MM - MARINE PNC 206308 ☐
- BACK HANDRAIL 1200 MM - MARINE PNC 206309 ☐
- Flue condenser for 1/2 module, 120 mm diameter PNC 206310 ☐
- Grease/oil kit container for 700 line frytops (half and module) and 900 line frytops (module) PNC 206346 ☐
- Chimney grid net, 400mm PNC 206400 ☐
- SCRAPER FOR RIBB PLATE FRY TOP PNC 206420 ☐
- - NOT TRANSLATED - PNC 206455 ☐
- - NOT TRANSLATED - PNC 206467 ☐
- - NOT TRANSLATED - PNC 206470 ☐
- Side handrail-right/left hand PNC 216044 ☐
- Frontal handrail 400mm PNC 216046 ☐
- Frontal handrail 800mm PNC 216047 ☐
- Frontal handrail 1200mm PNC 216049 ☐
- Frontal handrail 1600mm PNC 216050 ☐
- Large handrail - portioning shelf, 400mm PNC 216185 ☐
- Large handrail - portioning shelf, 800mm PNC 216186 ☐
- 2 side covering panels for top, d=900mm PNC 216278 ☐
- Pressure regulator for gas units PNC 927225 ☐

### Recommended Detergents

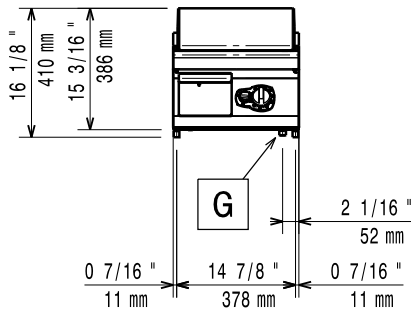
- \*NOT TRANSLATED\* PNC 0S2292 ☐



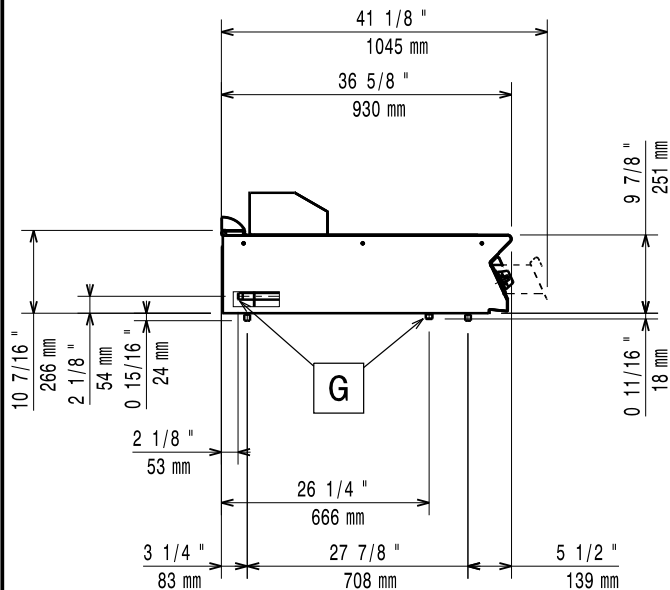
**Electrolux**  
PROFESSIONAL

## Modular Cooking Range Line 900XP 400mm Gas Fry Top, Ribbed Brushed Chrome Plate

Front



Side



EQ = Equipotential screw  
G = Gas connection

Top



### Gas

Gas Power:	10 kW
Standard gas delivery:	Natural Gas G20 (20mbar)
Gas Type Option:	LPG; Natural Gas
Gas Inlet:	1/2"

### Key Information:

Working Temperature MIN:	90 °C
Working Temperature MAX:	270 °C
External dimensions, Width:	400 mm
External dimensions, Depth:	930 mm
External dimensions, Height:	250 mm
Net weight:	55 kg
Shipping weight:	56 kg
Shipping height:	580 mm
Shipping width:	460 mm
Shipping depth:	1020 mm
Shipping volume:	0.27 m <sup>3</sup>
Cooking surface width:	330 mm
Cooking surface depth:	700 mm

If appliance is set up or next to or against temperature sensitive furniture or similar, a safety gap of approximately 150 mm should be maintained or some form of heat insulation fitted.



Modular Cooking Range Line  
900XP 400mm Gas Fry Top, Ribbed Brushed Chrome Plate

The company reserves the right to make modifications to the products without prior notice. All information correct at time of printing.

2025.04.19